

CHELAN COUNTY

MONTHLY FINANCIAL REPORT

NOVEMBER 2012



HIGHLIGHTS:

General Fund summary, projected and actual:

	Projected Year-to-Date	Actual Year-to-Date
Revenue	29,098,469	31,262,771
Expenditures	28,042,748	28,073,515
Net Income (Deficit)	1,055,721	3,189,256
Beginning Fund Balance	1,600,000	2,231,455
Current Fund Balance	2,655,721	5,420,711
Ending Cash Balance		6,717,546

The above projected numbers do not include emergency appropriations or unbudgeted revenue. Expenditures, revenues, and fund balances in this report are compiled on the modified accrual basis.



Prepared by:
Brad Posenjak, CPA
 Chief Deputy Auditor
 (509) 667-6655
brad.posenjak@co.chelan.wa.us

Previous monthly financial reports are available at http://www.co.chelan.wa.us/ad/accounting/county_budget.htm

GENERAL FUND - BY CATEGORY

Through November 30, 2012

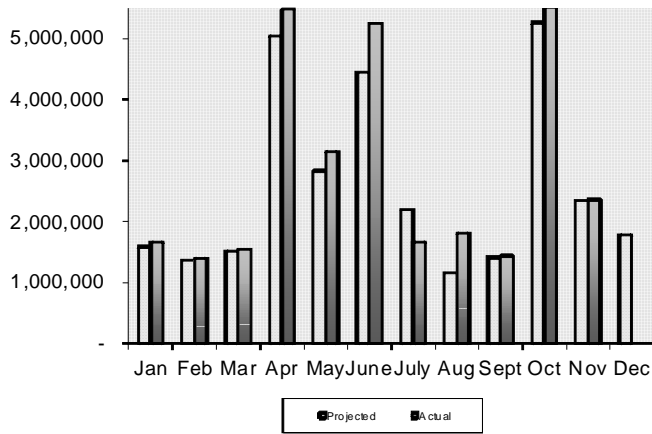
REVENUE	Month-To-Date			Year-To-Date		
	Projected	Actual	Variance	Projected	Actual	Variance
Property Tax	1,200,083	1,249,695	49,612	10,509,511	10,714,061	204,551
Sales Tax	489,539	488,023	(1,516)	4,487,683	4,762,980	275,297
Prop. Tax Penalty & Interest	65,063	59,438	(5,625)	681,490	1,083,882	402,392
Building and Planning Fees	64,040	54,331	(9,710)	865,501	1,031,232	165,731
PILT	0	0	0	2,175,200	2,313,538	138,338
PUD Priviledge Tax	0	0	0	975,000	1,368,421	393,421
Liquor X & P	0	0	0	124,838	152,371	27,533
Wenatchee Court	10,229	59,032	48,803	162,115	220,502	58,386
Law Enforcement Contracts	571,911	29,928	(541,984)	2,362,242	2,311,340	(50,902)
Recording Fees	11,175	13,001	1,826	126,457	141,822	15,365
Motor Vehicle Licensing	25,545	30,852	5,307	381,747	378,073	(3,674)
Probation Services	16,266	21,389	5,122	233,557	230,158	(3,399)
Interfund Payments	83,025	52,529	(30,496)	1,304,121	1,313,129	9,008
Court Fines	58,689	80,949	22,260	777,741	723,310	(54,431)
Treasury Interest	5,083	2,866	(2,217)	132,491	137,408	4,918
Grants\Entitlements	139,631	73,776	(65,855)	2,029,525	2,061,261	31,736
Other *	141,740	140,673	(1,067)	1,769,249	2,319,282	550,033
TOTAL	2,882,020	2,356,481	(525,539)	29,098,469	31,262,771	2,164,302

EXPENDITURES	Month-To-Date			Year-To-Date		
	Projected	Actual	Variance	Projected	Actual	Variance
10 - Salaries & Wages	1,213,022	1,225,206	12,183	13,217,696	13,029,882	(187,814)
20 - Personnel Benefits	461,120	461,001	(119)	5,166,927	5,012,451	(154,476)
30 - Supplies	48,557	59,288	10,731	493,094	553,676	60,582
40 - Other Services/Charges	365,768	405,836	40,068	4,431,795	4,500,362	68,567
50 - Intergovernmental Svcs	44,286	30,724	(13,561)	357,693	400,768	43,075
90 - Interfund Payments	287,817	482,012	194,195	4,375,544	4,576,376	200,832
00 - Reclassifications	0	0	0	0	0	0
TOTAL	2,420,569	2,664,067	243,498	28,042,748	28,073,515	30,766

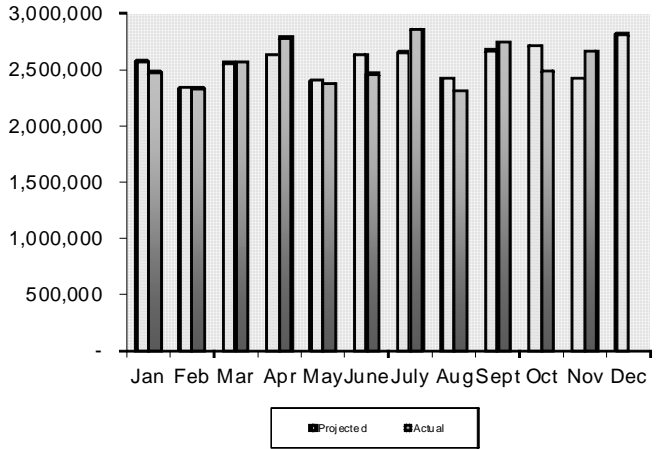
Projected columns are calculated by comparing actuals from the past five years on a monthly basis. The monthly averages are then applied to the 2012 budget.

* Other revenues include various small fees, grants, and state funds.

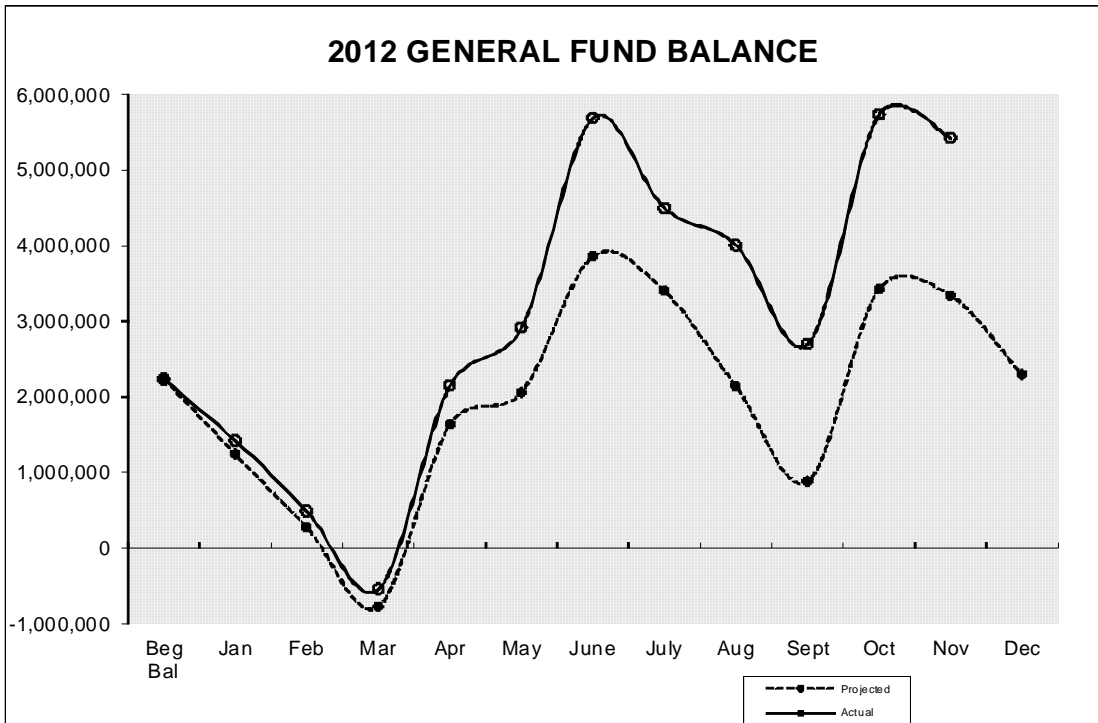
MONTHLY GENERAL FUND REVENUES



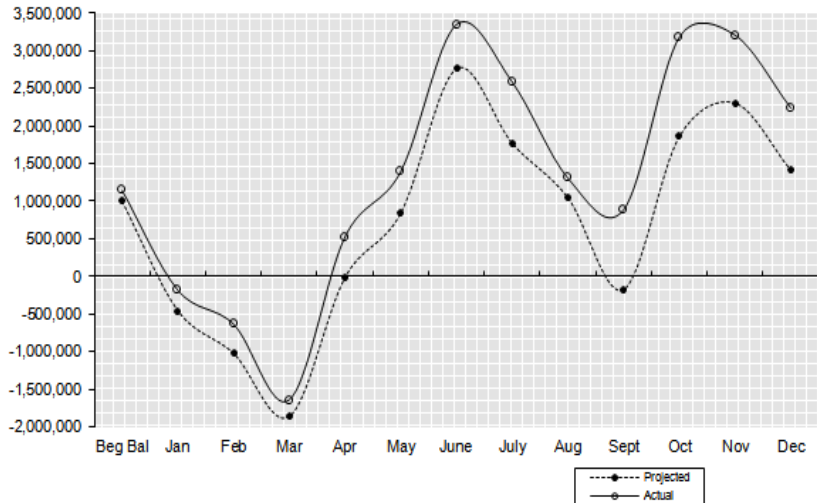
MONTHLY GENERAL FUND EXPENDITURES



2012 GENERAL FUND BALANCE



2011 GENERAL FUND BALANCE



REVENUE

Through November 30, 2012

GENERAL FUND

Dept # / Department	2012 Budget	2012 Actual	Balance	Percent Received
010 Reserve	0	466	(466)	100.0%
010 Assessor	40	86,690	(86,650)	216724.5%
015 Auditor *	883,967	835,418	48,549	94.5%
020 Community Development	1,011,307	1,094,017	(82,710)	108.2%
040 Clerk	786,515	785,635	880	99.9%
045 Commissioners	9,153,453	9,531,089	(377,636)	104.1%
050 Coroner	15,000	15,892	(892)	105.9%
052 Information Technology	107,444	104,325	3,119	97.1%
055 Facilities Maintenance	634,294	593,348	40,946	93.5%
065 District Court	1,319,653	1,176,138	143,515	89.1%
066 District Court Probation	306,529	264,633	41,896	86.3%
075 Extension Services	56,385	50,293	6,092	89.2%
085 Juvenile Services	653,997	582,608	71,389	89.1%
105 Non-Departmental	623,440	573,860	49,580	92.0%
139 Child Support Enforcement	402,638	271,055	131,583	67.3%
140 Prosecuting Attorney	561,841	454,373	107,468	80.9%
145 Sheriff *	2,770,926	2,595,778	175,148	93.7%
155 Superior Court System	89,951	113,786	(23,835)	126.5%
165 Treasurer	1,093,218	1,419,305	(326,087)	129.8%
170 Property Taxes	10,572,216	10,714,061	(141,845)	101.3%
TOTALS	31,042,814	31,262,771	(219,957)	100.7%

SPECIFIC FUNDS

Fund	2012 Budget	2012 Actual	Balance	Percent Received
110 County Roads	17,422,317	12,217,057	5,205,260	70.1%
119 Ohme Gardens	206,690	184,768	21,922	89.4%
125 Horticulture	121,758	121,056	702	99.4%
128 Noxious Weed	299,951	235,309	64,642	78.4%
180 Natural Resources	3,977,152	960,820	3,016,332	24.2%
405 Wenatchee River Park	242,250	246,424	(4,174)	101.7%
410 Expo Center	146,162	160,218	(14,056)	109.6%
411 Fair	173,500	191,041	(17,541)	110.1%
450 Regional Justice Center	8,179,838	7,371,412	808,426	90.1%
510 ER&R	2,855,949	1,852,874	1,003,075	64.9%
530 Motor Pool	946,724	1,214,100	(267,376)	128.2%

* Includes additional revenue budget than what was originally budgeted

EXPENDITURES

Through November 30, 2012

GENERAL FUND

Dept # / Department	2012 Budget	Budget Adjs	2012 Actual	Balance	Percent Expended
010 Assessor	1,107,849	0	957,651	150,198	86.4%
015 Auditor	1,058,166	30,000	958,494	129,672	88.1%
016 Board of Equalization	7,045	1,420	5,367	3,098	63.4%
020 Community Development	1,476,894	(65,000)	1,174,755	237,139	83.2%
030 Civil Service Comm	11,097	(1,800)	5,855	3,442	63.0%
040 Clerk	1,014,020	0	903,928	110,092	89.1%
045 Commissioners	657,054	32,270	618,914	70,410	89.8%
050 Coroner	168,850	0	144,773	24,077	85.7%
052 Information Technology	600,422	0	543,358	57,064	90.5%
055 Facilities Maintenance	1,466,271	0	1,196,971	269,300	81.6%
065 District Court	1,131,163	7,708	976,075	162,796	85.7%
066 District Court Probation	405,227	0	364,137	41,090	89.9%
075 Extension Services	275,735	0	239,927	35,808	87.0%
085 Juvenile Services	2,598,999	0	2,318,995	280,004	89.2%
105 Non-Departmental	7,215,183	290,000	6,697,494	807,689	89.2%
139 Child Support Enforcement	354,044	0	274,112	79,932	77.4%
140 Prosecuting Attorney	1,792,224	0	1,563,720	228,504	87.3%
145 Sheriff	7,982,690	381,711	7,723,995	640,406	92.3%
155 Superior Court System	963,606	11,265	900,061	74,810	92.3%
165 Treasurer	577,206	0	504,934	72,272	87.5%
TOTALS	30,863,745	687,574	28,073,515	3,477,804	89.0%

SPECIFIC FUNDS

Fund	2012 Budget	Budget Adjs	2012 Actual	Balance	Percent Expended
110 County Roads	17,803,477	0	12,728,573	5,074,904	71.5%
119 Ohme Gardens	227,142	0	175,281	51,861	77.2%
125 Horticulture	134,149	0	89,845	44,304	67.0%
128 Noxious Weed	311,633	0	248,052	63,581	79.6%
180 Natural Resources	3,999,676	0	1,233,613	2,766,063	30.8%
405 Wenatchee River Park	266,345	0	251,292	15,053	94.3%
410 Expo Center	136,308	0	114,820	21,488	84.2%
411 Fair	172,166	0	129,666	42,500	75.3%
450 Regional Justice Center	8,430,974	0	7,523,270	907,704	89.2%
510 ER&R	2,767,380	0	2,623,382	143,998	94.8%
530 Motor Pool	948,329	0	936,781	11,548	98.8%

CASH & INVESTMENTS

Fund	Septebmer 30, 2012 Cash & Investments	October 31, 2012 Cash & Investments	November 30, 2012 Cash & Investments
010 General	4,150,328	6,954,113	6,717,546
110 County Roads	2,425,467	2,359,368	2,349,127
119 Ohme Gardens	121,027	113,634	104,465
125 Horticulture Pest & Disease	37,105	40,634	72,208
128 Noxious Weed	3,196	59,378	19,820
140 Cashmere-Dryden Airport	30,306	27,521	25,170
180 Natural Resources	89,693	160,148	156,034
190 Criminal Justice Tax	1,266,300	1,330,504	1,100,156
301 REET 1	1,224,792	1,242,113	1,181,222
405 Wenatchee River Park	149,698	85,477	70,809
410 Expo Center	36,505	72,850	48,780
411 Fair	114,107	95,062	83,476
450 Regional Justice Center	1,052,092	695,047	760,315
510 ER&R	1,483,092	1,392,206	1,255,355
526 Health Insurance	224,516	220,474	228,677
530 Motor Pool	7,793	135,775	287,541
535 Unemployment Comp	127,185	125,341	138,424
540 Tort Claims & Insurance	6,208	184,222	164,850

Accounts Receivable Outstanding Older than 30 days

Auditor

010015-01599	6/1/2012	DSHS - MA	248.00
010015-01627	9/4/2012	Central Washington Title	3,701.00
010015-01643	10/3/2012	DSHS - MA	32.00
010015-01643	10/4/2012	Hospital District No 1	2,486.79
010015-01649	10/11/2012	Dept of Licensing	1,370.45
010015-01653	10/23/2012	DSHS Financial Recovery	312.00

Clerk

010040-00584	10/3/2012	Office of Support Enforcement	12,095.00
--------------	-----------	-------------------------------	-----------

Commissioners

010045-00084	6/29/2012	DSHS	214.13
010105-00046	10/2/2012	City of Wenatchee	569.27

Extension

010075-00186	8/15/2012	Washington State University	14,947.40
010075-00187	8/15/2012	Washington State University	29,895.46
010075-00188	9/11/2012	Washington State University	19,427.53
136001-00022	3/6/2012	Council for Children/Families	34.97

Juvenile

010085-01160	7/10/2012	Juvenile Rehab Admin Reg 1	0.03
191001-00111	07/03/2012	Regina McDougall, AOC	42.51

Sheriff

010145-01024	8/8/2012	City of Leavenworth	0.02
010145-01027	8/20/2012	Grant County DEM	680.58
010145-01035	9/26/2012	Icicle Enterprises	423.49
010145-01036	9/26/2012	WASPC	1,000.00
010145-01039	9/26/2012	WASPC	22,789.62
010145-01040	9/26/2012	Grant County DEM	194.31
010145-01041	10/3/2012	WA Assn of Sheriffs	5,554.00
010145-01048	10/18/2012	Forest Title III	19,613.64
010145-01051	10/24/2012	Grant County DEM	54,114.29

Superior Court

010155-00027	6/12/2012	AOC	5,646.87
--------------	-----------	-----	----------

Public Works

110001-00523	6/25/2012	Selland Construction, Inc	75.00
401001-02077	10/2/2012	Selland Construction, Inc	876.00
401001-02087	10/2/2012	Waste Management	714.00
510001-00813	5/25/2012	Chelan County Coroner	157.57
530001-00146	10/22/2012	Chelan Co Coop Extension	1.00

Natural Resources

180001-00708	12/31/2011	WA St Dept of Ecology	9,191.01
180001-00713	12/31/2011	National Fish & Wildlife Found	2,022.12
180001-00714	12/31/2011	National Fish & Wildlife Found	18,641.10
180001-00720	12/31/2011	Emergency Management WA	1,136.31
180001-00745	5/22/2012	National Fish & Wildlife Found	1,391.68
180001-00755	7/19/2012	WA St Dept of Ecology	4,951.88
180001-00763	9/18/2012	Recreation/Conservation	12,772.61
180001-00773	10/29/2012	WA St Dept of Ecology	2,894.59
180001-00774	10/29/2012	WA St Dept of Ecology	1,944.74
180001-00775	10/29/2012	WA St Dept of Ecology	600.00
180001-00776	10/29/2012	WA St Dept of Ecology	20,937.51

Substance Abuse

193001-00172	06/27/2012	DSHS	709.05
193001-00173	07/18/2012	DSHS	74,633.00
193001-00174	07/18/2012	DSHS	0.39

Regional Justice Center

450001-01865	05/24/2011	DHS/ICE	147.00
450001-01876	06/06/2011	DHS/ICE	367.50
450001-01909	07/05/2011	DHS/ICE	955.50
450001-01941	08/02/2011	DHS/ICE	294.00
450001-01973	09/05/2011	DHS/ICE	441.00
450001-02014	10/04/2011	DHS/ICE	220.50
450001-02052	11/02/2011	DHS/ICE	1,617.00
450001-02083	12/05/2011	DHS/ICE	588.00
450001-02114	12/31/2011	DHS/ICE	661.50
450001-02142	02/02/2012	DHS/ICE	882.00
450001-02197	04/09/2012	DHS/ICE	441.00
450001-02232	05/07/2012	DHS/ICE	441.00
450001-02264	06/06/2012	DHS/ICE	441.00
450001-02348	09/05/2012	City of Wenatchee	293.50
450001-02355	09/11/2012	Department of Corrections	3,702.16

Health Insurance

526001-00003	12/31/2010	Daryl Mathena	241.03
526001-00004	3/8/2011	Daryl Mathena	458.78

If any of these outstanding receivables have been paid, will not be paid, or need adjustment,
please contact the Chelan County Auditor's Accounting Office.